

Premises ID V-8

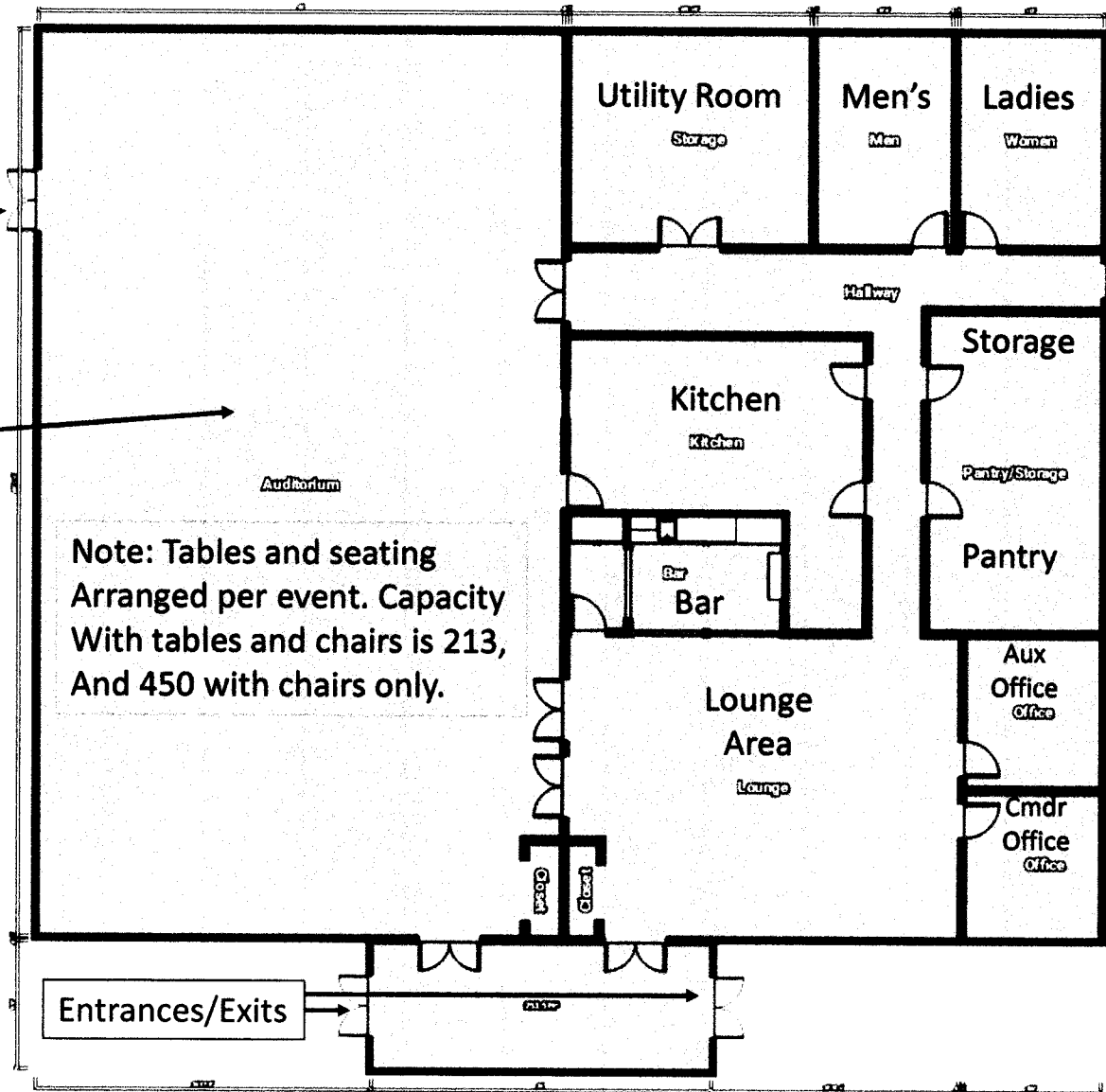
Building dimensions are  
80' by 80'

Emergency Exit

Main Hall

East Parking Lot

East Mill Street



Emergency Exit

PROCEIVED

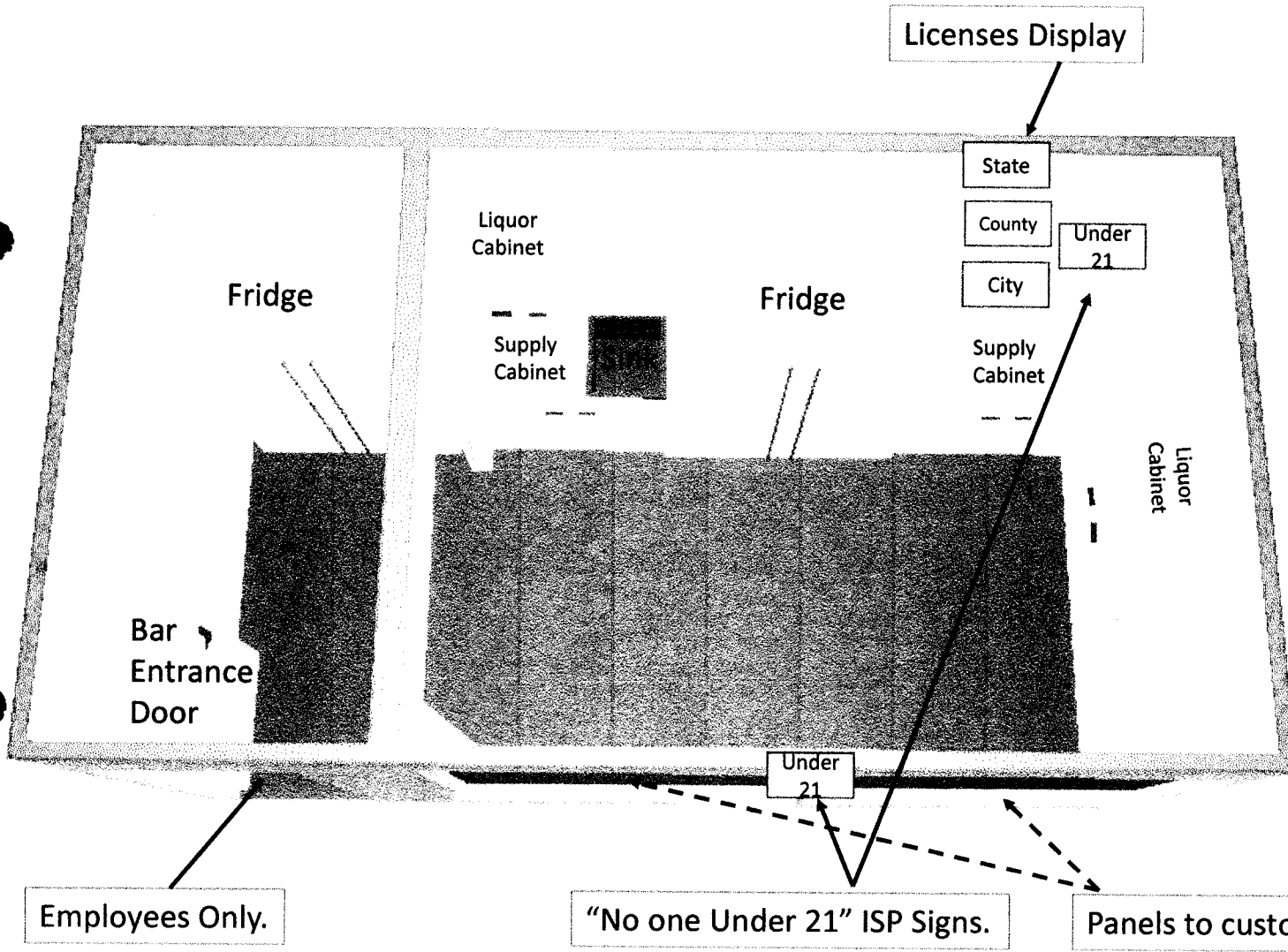
AUG 13 2020

BOARD STATE POLICE  
ALCOHOL BEVERAGE CONTROL

West Parking Lot

Premises ID V-8

RECEIVED  
NOTES  
AUG 13 2023  
IDAHO STATE POLICE  
ALCOHOL BEVERAGE CONTROL



- Bar Entrance Door is locking.
- Liquor Cabinets are locking.
- Panels to customer area Are locking.
- The bar area is inside the Main facility which is also Locking.
- When facility is secure during Non-business hours, liquor is Under triple locks, (front Door, bar door and cabinet Doors).