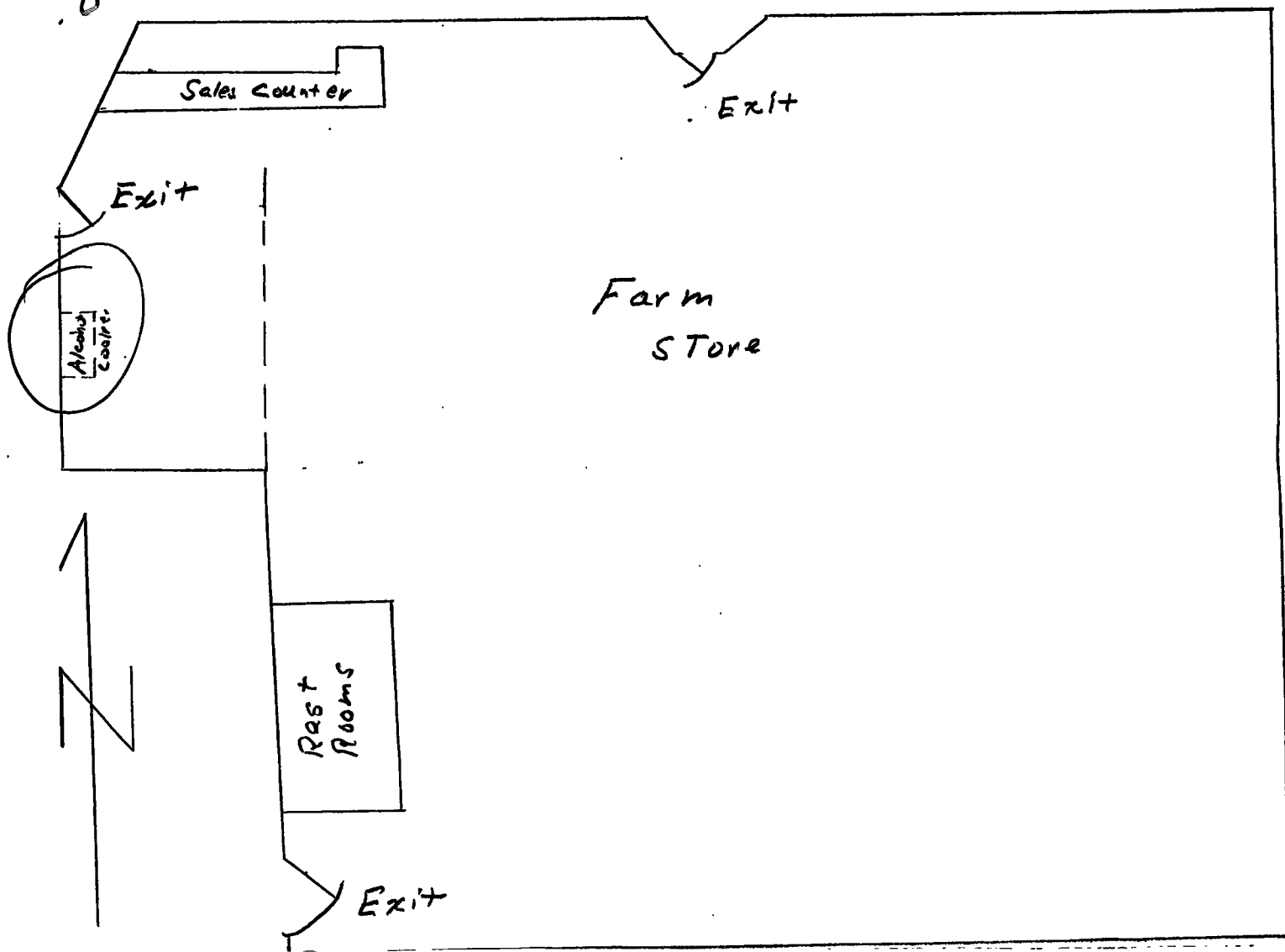


indicated in the margin the direction and the distance to the nearest school, church, or other place of worship, measuring from the nearest entrance of the licensed premi the nearest entrance of the school, church, or place of worship, if within 300 feet.)

MAIN Street



Wendell Store

**SCANNED**

**RECEIVED**

**MAY 18 2007**

IDAHO STATE POLICE  
ALCOHOL BEVERAGE CONTROL