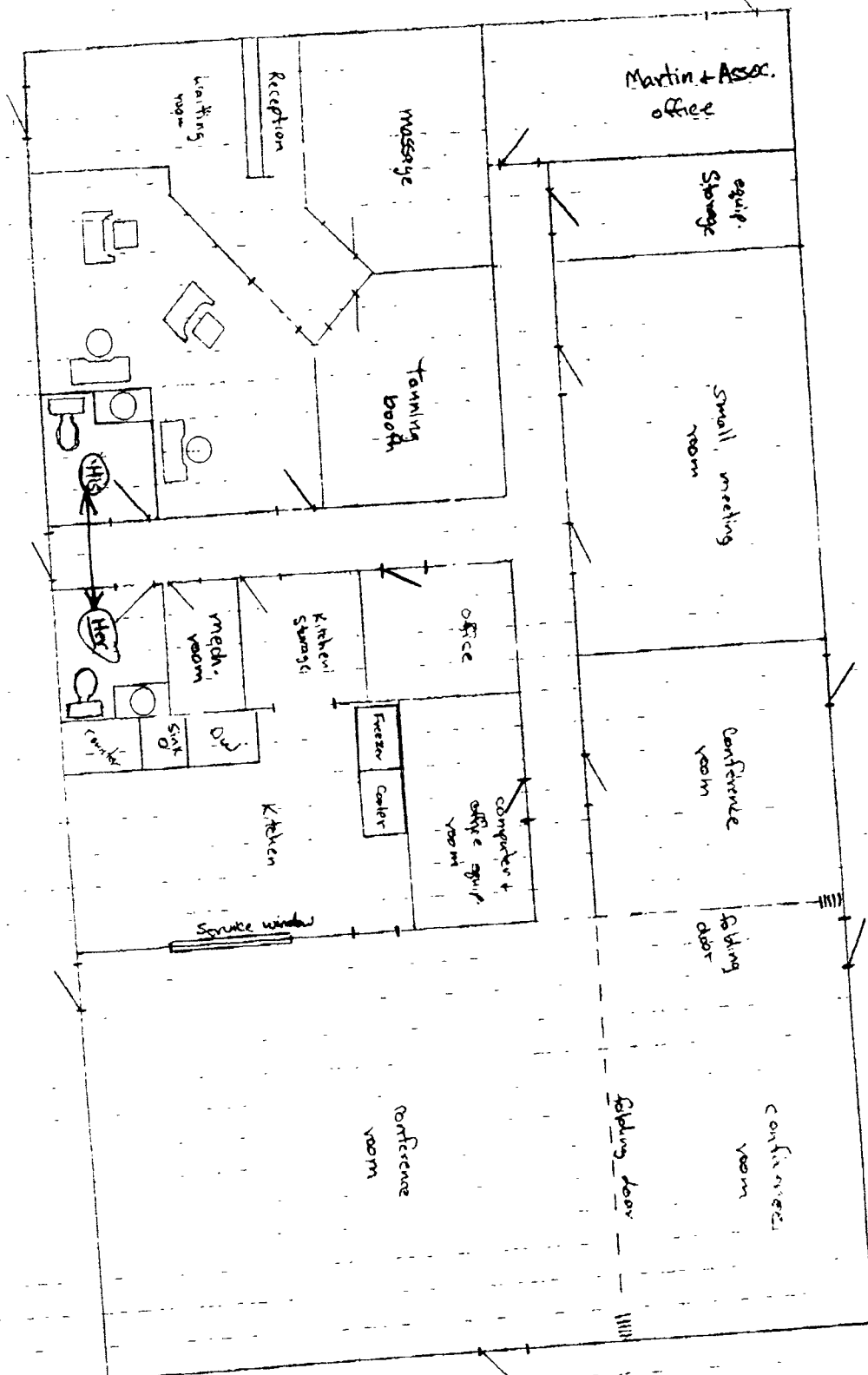


PREMISE ID 7B-41



EVENT CENTER

larger windows

(patio)

proposed new door

Attn: Dan
From: Terry

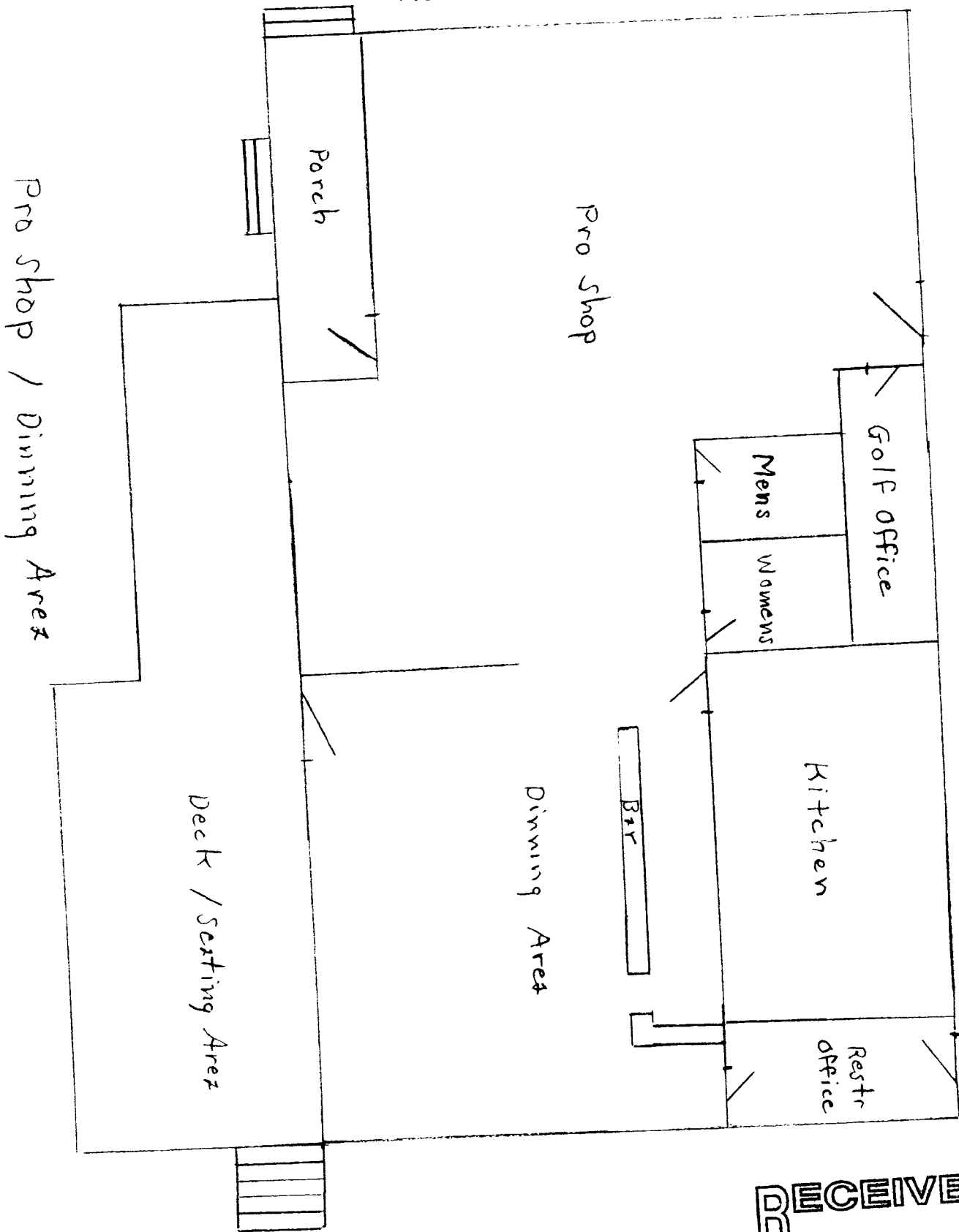
RECEIVED

JAN 28 2019

IDAHO STATE POLICE
ALCOHOL BEVERAGE CONTROL

NEW

PREMISE ID 7B-41



RECEIVED
JAN 28 2013
IDAHO STATE POLICE
ALCOHOL BEVERAGE CONTROL

PRODUCED BY AN AUTODESK EDUCATIONAL PRODUCT

NEW

Real Estate Office

Event Center
Club House

Stone

Fairway

Meadows

PREMISE ID

7B-4

BLOCK 4

CONDO

CONDO

CONDO

5

6

25

DUPLEX

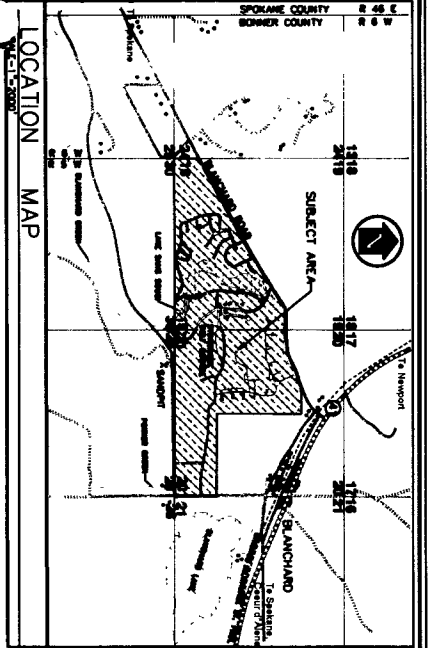
DUPLEX

JAN 28 2019

IDAHO STATE POLICE
ALCOHOL BEVERAGE CO

PRODUCED BY AN AUTODESK EDUCATIONAL PRODUCT

NEW



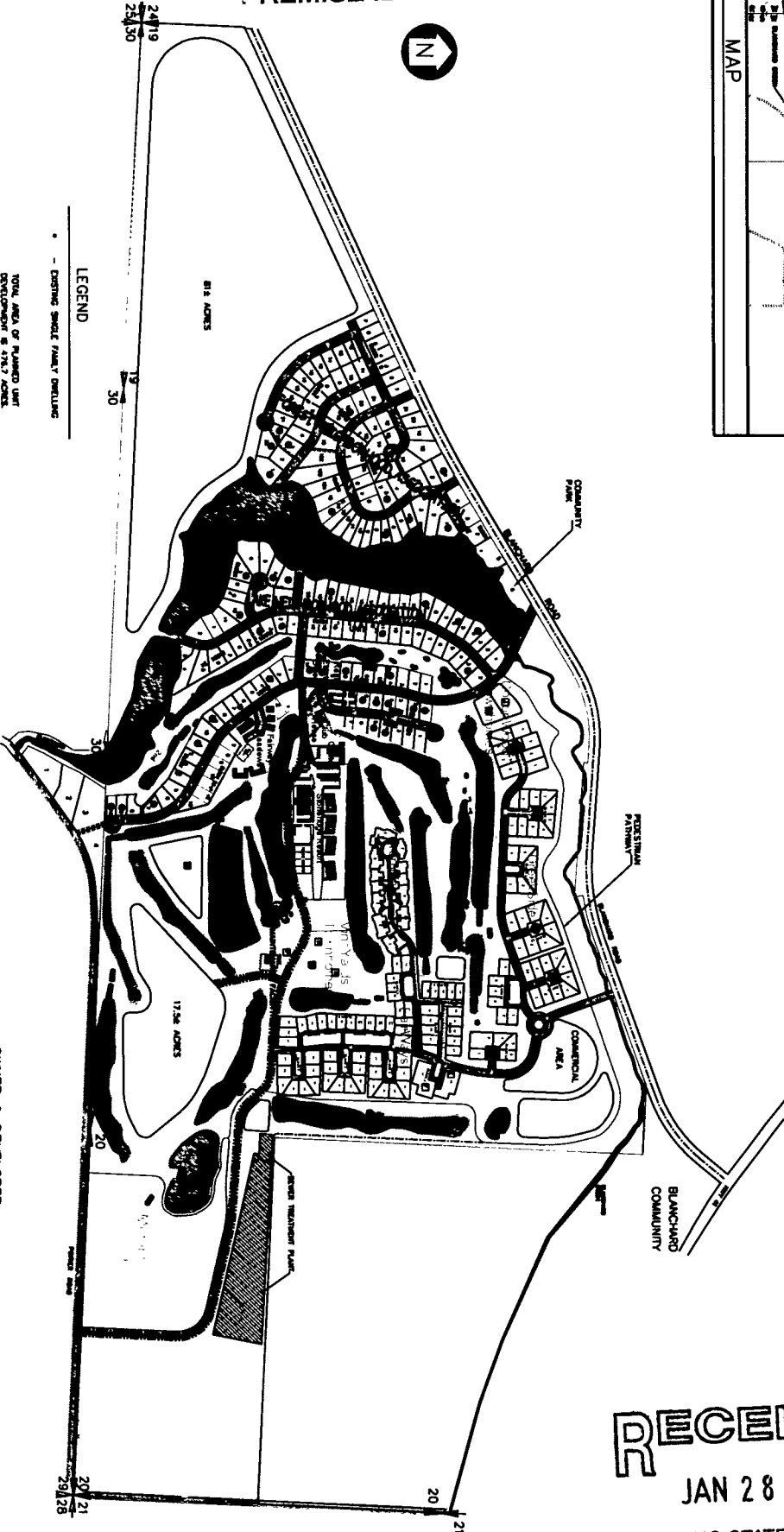
STONERIDGE

GOLF AND RECREATION COMMUNITY

BLANCHARD IDAHO

RECEIVED
JAN 28 2019
IDAHO STATE POLICE
ALCOHOL BEVERAGE CONTROL

PREMISE ID 7B-41



LEGEND

- EXISTING SINGLE FAMILY DWELLING

TOTAL AREA OF PLANNED UNIT DEVELOPMENT IS 516.7 ACRES.
NET AREA OF OPEN SPACE IS 54.1 ACRES.

GRAPHIC SCALE



OWNER & DEVELOPER

GOS INVESTMENT, LLC
4885 SOUTH 800 EAST, SUITE 100
SALT LAKE CITY, UT 84117