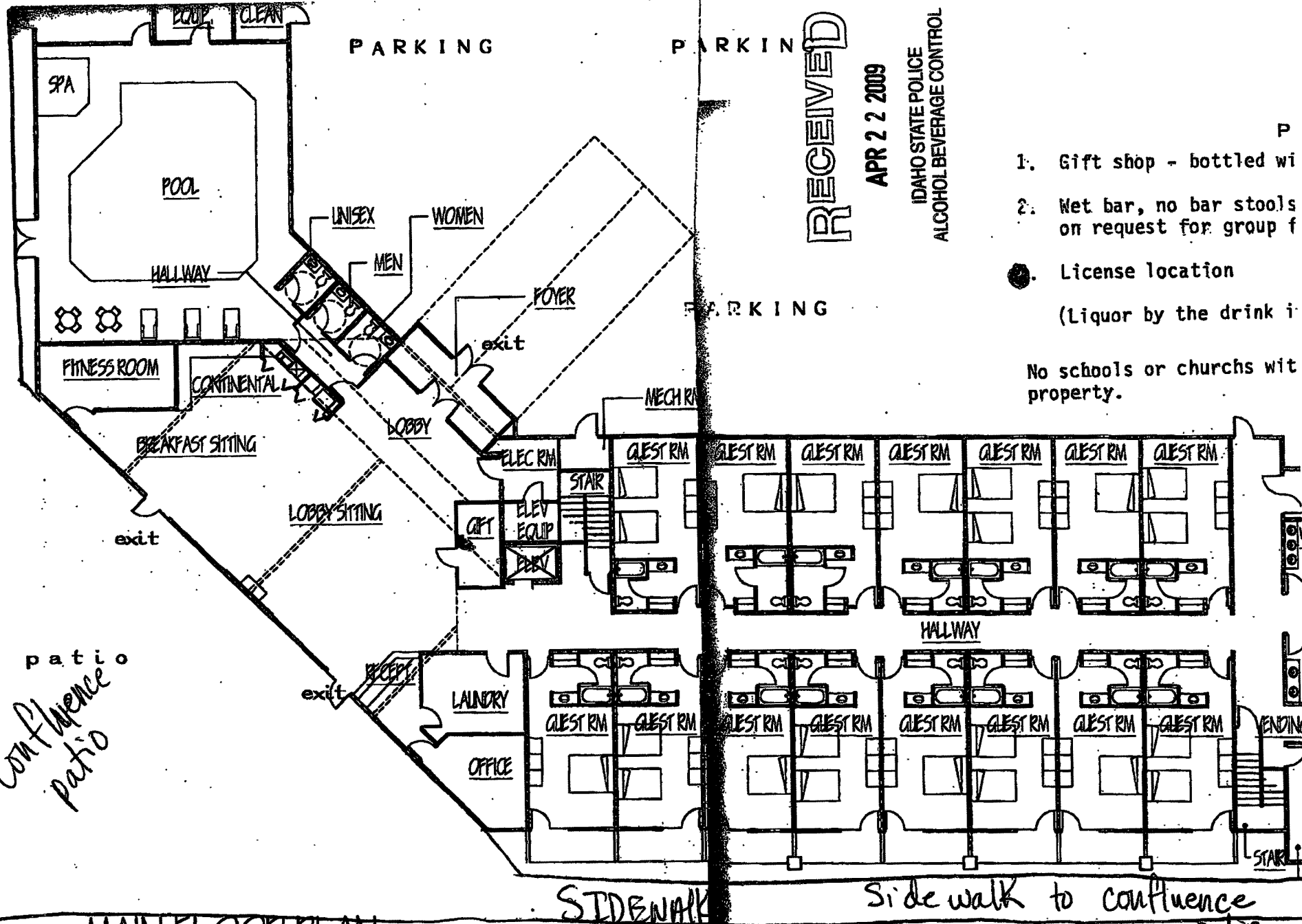


*Sidewalk*

*patio  
confluence  
patio*



# MAIN FLOOR PLAN

LODGE AT RIVER'S EDGE

SCALE: 1/16" = 1'-0"

owned & operated by River's Edge Hospitality, LLC

RECEIVED

APR 22 2009

IDAHO STATE POLICE  
ALCOHOL BEVERAGE CONTROL

1. Gift shop - bottled wi
2. Wet bar, no bar stools on request for group f
3. License location  
(Liquor by the drink i

No schools or churches wit property.

*SIDENWALK*

*Side walk to confluence  
patio*

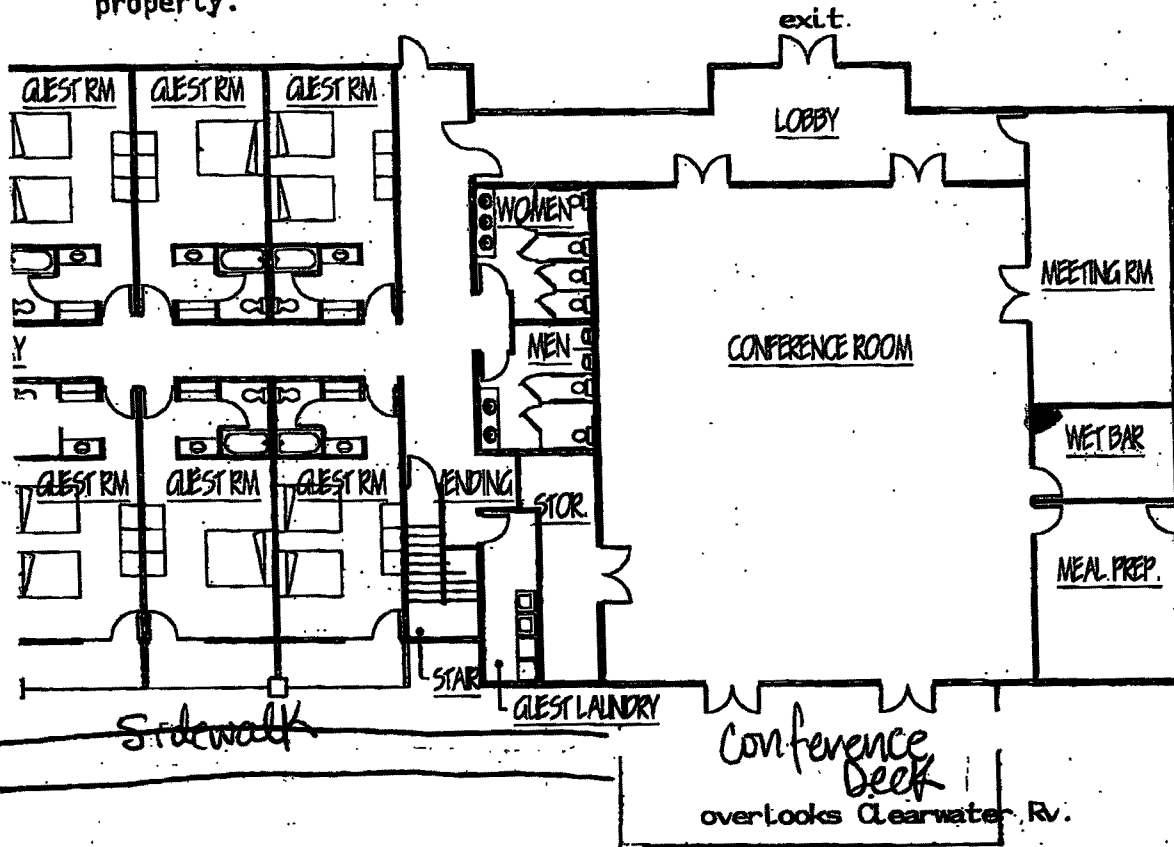
# PARKING

1. Gift shop - bottled wine
2. Wet bar, no bar stools. Available on request for group functions, etc.

● License location

(Liquor by the drink in location #2 only)

No schools or churches within 300 feet of property.



RECEIVED

APR 22 2009

IDAHO STATE POLICE  
ALCOHOL BEVERAGE CONTROL